

DEVELOPMENT

MDA

AGENCY

SOLAR STATION CONSTRUCTION



ABOUT THE PROJECT

THERE ARE ABOUT 100 HECTARES OF LAND CLASSIFIED AS "RESERVE LAND" ON THE TERRITORY OF THE DISTRICT. IT IS POSSIBLE TO PLACE A SOLAR POWER STATION TO REDUCE COSTS, LOCATED 4 KM AWAY. A NEW PRODUCTION FACILITY JSC "KRICHEVCEMENTNOSHIFER". PLACING A COMPLEX OF SOLAR PANELS ON 100 HECTARES WILL MAKE IT POSSIBLE TO OBTAIN A 25 MW POWER PLANT.

PROJECT OBJECTIVE:

Power generation and increasing the competitiveness of JSC "Krichevtsementnoshifer»

Location of the project: The Republic of Belarus, Mogilev Region, Krichev District

Investment: 24 000 000 USD

Contacts:

213500, Krichev, Sovetskaya str, 51

Phone number: +375224126-621 mobile: +37529294-75-05

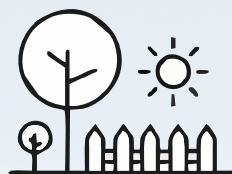
Fax: +3752241 26-618 Website: <http://krichev.gov.by/>

E-mail: econom@krichev.gov.by vedkr@tut.by



ABOUT THE PROJECT

ADVANTAGES OF THE PROJECT



**100 HA
ALLOCATION
OF THE LAND**



**AVAILABILITY OF UTILITIES:
POWER SUPPLY -0.3 KM,
WATER SUPPLY -0.1 KM,
GAS PIPELINE -0.5 KM,**



**DISTANCE TO THE HIGHWAY OF
REPUBLICAN SIGNIFICANCE
P 43 – 5.6 KM,
TO THE RAILWAY STATION
1 KRICHEV OF - 10 KM**

PREFERENTIAL TREATMENT: 💰

INVESTMENT AGREEMENT:



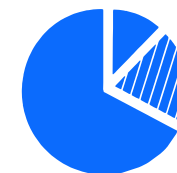
- ✓ provision of a land plot without an auction
- ✓ exemption from payment of customs duties and VAT on the import of technological equipment

SMALL TOWNS AND COUNTRYSIDE:

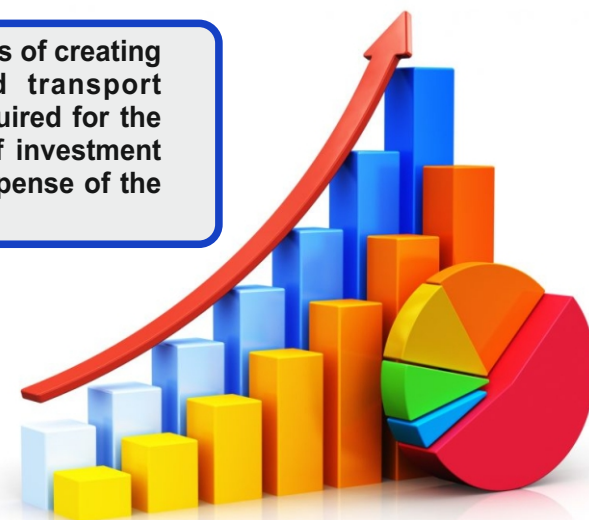


- ✓ exemption from import duties
- ✓ exemption from paying state fees for issuing a license
- ✓ exemption from income tax, property tax, income tax

SOUTH-EAST DISTRICT OF MOGILEV REGION:



- ✓ exemption from targeted fees and tax incentives
- ✓ reimbursement up to 20% of the cost of capital costs for an investment project
- ✓ financing the costs of creating engineering and transport infrastructure required for the implementation of investment projects at the expense of the budget



KRICHEV DISTRICT

ABOUT THE DISTRICT



**33.9 thsd
people**



**777 sq.km
area of
the district**

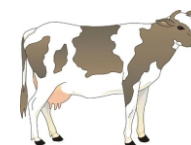
**25,3 thsd HA
agricultural land
area**

**24,4 thsd HA
arable land
area**

The economic development of the district based on agricultural production. The main directions are:



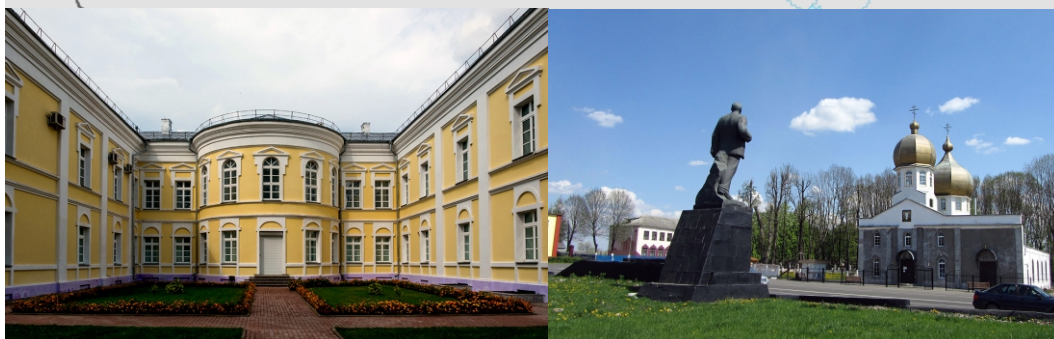
**> DIARY
PRODUCTION**



**> CATTLE
RAISING**



**> FORAGE
HARVESTING**



PROSPECTIVE INVESTMENT PROJECTS OF MOGILEV REGION



+375 222 74 61 91
+375 44 582 28 18



agencymogilev@ya.ru



Belarus, Mogilev,
boulevard Yubileyniy, 21

THE AGENCY IS READY TO HELP FOREIGN INVESTORS INTERESTED UN DOING BUSINESS IN BELARUS

- Presentation information on investment opportunities, preferential regimes and benefits, industries, legislation
- Provision of current information on investment projects
- Selection and provision of information on options for land and premises
- Search for potential partners for the implementation of the investment project; organization of meetings, negotiations with potential partners to establish and support for the investor during the negotiations
- Organization of visits to Mogilev Region (development of a program of stay, assistance in obtaining a visa)
- Representation the interests of the investor in negotiations with government officials on the implementation of investment projects, as well as on improving business practices in Mogilev Region



+375 222 74 61 91
+375 44 582 28 18



agencymogilev@ya.ru



Belarus, Mogilev,
boulevard Yubileynyi, 21

- The following major benefits related to the implementation of the project are provided in connection with the conclusion of the investment agreement



- VAT deduction
- Exemption from VAT
- Land plots are granted for rent without auction

INVESTMENT AGREEMENT

- The following benefits related to the implementation of the project are provided in connection with the location of the land plot



- 0% income tax VAT
- Exemption from custom import duties
- Exemption from payment of the state fee for issuing a license

SMALL TOWNS AND RURAL AREAS

- The following benefits granted to the investors for implementation of the project in the South-Eastern region of Mogilev Region



- 10% income tax
- 24% pension insurance
- Financing the costs of creating engineering and transport infrastructure

SOUTH-EASTERN REGION OF MOGILEV REGION



+375 222 74 61 91
+375 44 582 28 18



agencymogilev@ya.ru



Belarus, Mogilev,
boulevard Yubileyniy, 21



Joint Stock Company
"MOGILEV REGION DEVELOPMENT AGENCY"

marr.by

WELCOME TO MOGILEV REGION!



+375 222 74 61 91
+375 44 582 28 18



agencymogilev@ya.ru



Belarus, Mogilev,
boulevard Yubileyniy, 21