

DEVELOPMENT

MDA

AGENCY



**CONSTRUCTION OF SPIRITUAL AND HISTORICAL CENTER  
"CASTLE HILL"**





# ABOUT THE PROJECT

KRICHEV IS ONE OF THE OLDEST CITIES IN THE REPUBLIC OF BELARUS AND IS ONE OF THE 20 OLDEST CITIES IN THE REPUBLIC OF BELARUS. THERE IS AN ARCHAEOLOGICAL MONUMENT "CASTLE HILL" IN THE HISTORICAL PART OF KRICHEV, WHERE IN XII-XVIII CENTURY THE KRICHEVSKY CASTLE WAS LOCATED. CURRENTLY, WORK IS UNDERWAY TO CREATE A SPIRITUAL AND HISTORICAL CENTER OF THE CITY OF KRICHEV. THE PROJECT ALSO PROVIDES FOR THE DEVELOPMENT OF THE TOURIST POTENTIAL OF THE REGION, THROUGH THE RECONSTRUCTION OF THE HOTEL UKPP "KOMMUNALNIK", WHICH IS LOCATED IN THE HISTORIC CENTER OF THE CITY.

## PROJECT OBJECTIVE:

The project is aimed at increasing the tourist attractiveness of the region, preserving the spiritual and historical heritage.

**Location of the project:** The Republic of Belarus, Mogilev Region, Krichev

**Investment:** 600 000 USD

**Contacts:**

213500, Krichev, Sovetskaya str, 51

Phone number: +375224126-621 mobile: +37529294-75-05

Fax: +3752241 26-618 Website: <http://krichev.gov.by/>

E-mail: [econom@krichev.gov.by](mailto:econom@krichev.gov.by) [vedkr@tut.by](mailto:vedkr@tut.by)





# ABOUT THE PROJECT

## ADVANTAGES OF THE PROJECT



**PLACEMENT OF  
OBJECTS IN THE  
CENTRAL PART  
OF KRICHEV**



**HISTORICAL  
UNIQUENESS OF  
THE INVESTMENT  
OBJECT**

# PREFERENTIAL TREATMENT: 💰

## INVESTMENT AGREEMENT:



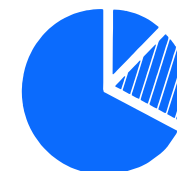
- ✓ provision of a land plot without an auction
- ✓ exemption from payment of customs duties and VAT on the import of technological equipment

## SMALL TOWNS AND COUNTRYSIDE:

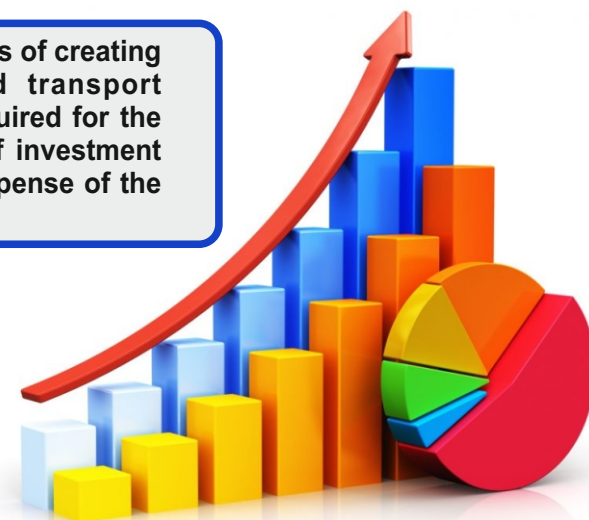


- ✓ exemption from import duties
- ✓ exemption from paying state fees for issuing a license
- ✓ exemption from income tax, property tax, income tax

## SOUTH-EAST DISTRICT OF MOGILEV REGION:



- ✓ exemption from targeted fees and tax incentives
- ✓ reimbursement up to 20% of the cost of capital costs for an investment project
- ✓ financing the costs of creating engineering and transport infrastructure required for the implementation of investment projects at the expense of the budget





# KRICHEV DISTRICT

## ABOUT THE DISTRICT



**33.9 thsd  
people**



**777 sq.km  
area of  
the district**

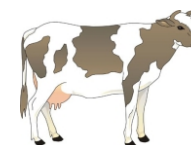
**25,3 thsd HA  
agricultural land  
area**

**24,4 thsd HA  
arable land  
area**

The economic development of the district based on agricultural production. The main directions are:



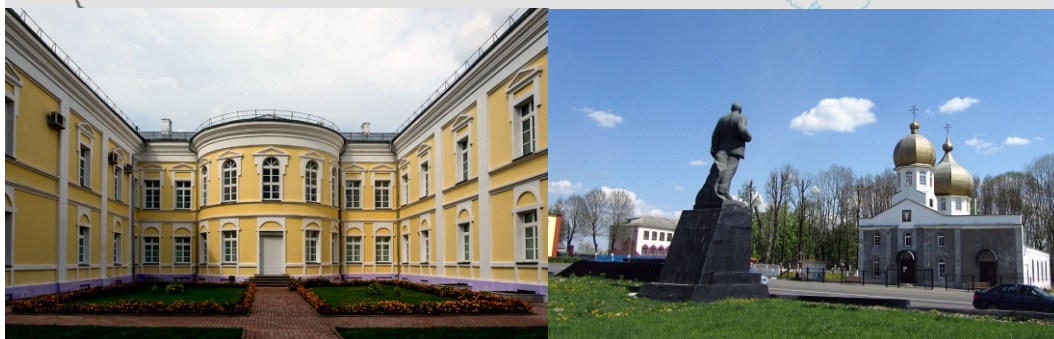
**DIARY  
PRODUCTION**



**CATTLE  
RAISING**



**FORAGE  
HARVESTING**







Joint Stock Company  
"MOGILEV REGION DEVELOPMENT AGENCY"

**marr.by**

# PROSPECTIVE INVESTMENT PROJECTS OF MOGILEV REGION



+375 222 74 61 91  
+375 44 582 28 18



[agencymogilev@ya.ru](mailto:agencymogilev@ya.ru)



Belarus, Mogilev,  
boulevard Yubileyniy, 21



## THE AGENCY IS READY TO HELP FOREIGN INVESTORS INTERESTED UN DOING BUSINESS IN BELARUS

- Presentation information on investment opportunities, preferential regimes and benefits, industries, legislation
- Provision of current information on investment projects
- Selection and provision of information on options for land and premises
- Search for potential partners for the implementation of the investment project; organization of meetings, negotiations with potential partners to establish and support for the investor during the negotiations
- Organization of visits to Mogilev Region (development of a program of stay, assistance in obtaining a visa)
- Representation the interests of the investor in negotiations with government officials on the implementation of investment projects, as well as on improving business practices in Mogilev Region



+375 222 74 61 91  
+375 44 582 28 18



agencymogilev@ya.ru



Belarus, Mogilev,  
boulevard Yubileynyi, 21



- The following major benefits related to the implementation of the project are provided in connection with the conclusion of the investment agreement



- VAT deduction
- Exemption from VAT
- Land plots are granted for rent without auction

## INVESTMENT AGREEMENT

- The following benefits related to the implementation of the project are provided in connection with the location of the land plot



- 0% income tax VAT
- Exemption from custom import duties
- Exemption from payment of the state fee for issuing a license

## SMALL TOWNS AND RURAL AREAS

- The following benefits granted to the investors for implementation of the project in the South-Eastern region of Mogilev Region



- 10% income tax
- 24% pension insurance
- Financing the costs of creating engineering and transport infrastructure

## SOUTH-EASTERN REGION OF MOGILEV REGION



+375 222 74 61 91  
+375 44 582 28 18



[agencymogilev@ya.ru](mailto:agencymogilev@ya.ru)



Belarus, Mogilev,  
boulevard Yubileyniy, 21





Joint Stock Company  
"MOGILEV REGION DEVELOPMENT AGENCY"

**marr.by**

# WELCOME TO MOGILEV REGION!



+375 222 74 61 91  
+375 44 582 28 18



[agencymogilev@ya.ru](mailto:agencymogilev@ya.ru)



Belarus, Mogilev,  
boulevard Yubileyniy, 21